

NEW

Thermographic camera KEW 5531 / 5532W

Quickly detect anomalies! Measure what you see with clear images and smooth motion.



5531
CE

KEW
CONNECT
5532W
CE

Three types of image formats: switching

Visible Light Thermal
"Thermal distribution image"

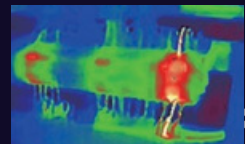
Integration

(Displaying the thermal distribution on a visible light image)

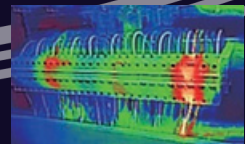
Visible light	Resolution
	KEW 5531: 640×480 KEW 5532W: 1600×1200



Thermal	Resolution
	KEW 5531: 96×96 KEW 5532W: 256×192



Integration Display the contours of the object clearly.



- Displays maximum and minimum temperatures simultaneously, allowing abnormal temperatures to be identified at a glance.
- High frame rate (25Hz) provides smooth and dynamic image display.
- Three image modes available: visible light, Thermal (heat distribution images), and fusion.
- Comes with an alarm feature to notify abnormal temperatures (5532W: buzzer sound and LED flashing).
- Equipped with a rechargeable lithium-ion battery.



5531

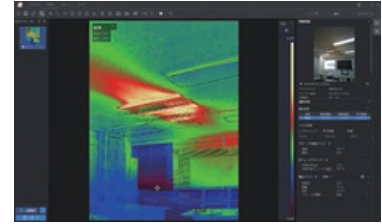
5532W

	5531	5532W
Temperature measurement		
Temperature range / accuracy	-20~550°C ±2%	
Thermal module		
Thermal image resolution	96×96 (9216 pixels)	256×192 (49,152 pixels)
NETD (Thermal Sensitivity)	<50mK (@25°C), F (Aperture) = 1.0	<40mK (@25°C), F (aperture) = 1.0
Focal Length	1.35mm	3.6mm
FOV (Field of View)	35mm 50.0°×50.0°	37.2°×50.0°
Frame Rate	25Hz	
IFOV (Instantaneous FOV)	8.89 mrad	3.3mrad
Aperture	F1.0	
Minimum focusing distance	0.1m	0.3m
Optical module		
Visible Resolution	640×480	1600×1200
Display	2.4-inch LCD	3.2-inch LCD
Internal Memory	4GB (JPEG images approx. 30,000 incl. measured data)	16GB (JPEG images approx. 90,000 incl. measured data)
Communication Interface	USB	USB and LAN
Operating Temperature and Humidity Range	10 to 50°C, relative humidity below 80% (no condensation)	-10 to 50°C, relative humidity below 80% (no condensation)
Storage Temperature and Humidity Range	-40 to 70°C, relative humidity below 80% (no condensation)	-20 to 60°C, relative humidity below 80% (no condensation)
Standards	IEC 60529 (IP54)、EN 61010-1 EN 50130-4、EN 55032 EN 61000-3-3、IEC 61000-3-2	IEC 60529 (IP54)、EN 61010-1 EN 50130-4、EN 55032 EN 301 489-1 V2.2.3 EN 301 489-17 V3.2.4 EN 300 328 V2.2.2、EN 62479
Operating Altitude	Below 2000 meters in height	
Battery type	Lithium-ion battery	
Operating time	Approx. 8 hours	Approximately 6 hours
Dimensions ,Weight	196 (L) × 60 (W) × 80 (D) mm / Approx. 335 g	222 (L) ×74 (W) ×83 (D) mm / Approx. 360 g
Accessories	Charging cable (USB), instruction manual	

Data analysis with dedicated software



Thermal image data can be transferred to a PC via USB, allowing data analysis and report creation.



The dedicated software can be downloaded from our website.

Compatible with measurement recording app (5532W)



With wireless LAN functionality, data can be transferred to tablets or smartphones, enabling real-time image display and data storage.

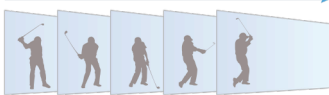


Android™ is a trademark or registered trademark of Google LLC.
iOS is a trademark or registered trademark of Cisco Technology, Inc. in the U.S. and other countries.

Smooth and motion-resistant image display

The high frame rate (25Hz) ensures image display without noticeable time lag.

The frame rate is 9Hz, meaning there are 9 frames per second.



"25Hz 1 second has 25 frames."



What is frame rate...?
It is displayed in Hertz (Hz) and indicates how frequently the thermal imaging camera updates the image per second.

Abnormal temperature can be identified at a glance.

Simultaneously display the central temperature, maximum temperature, and minimum temperature.

Display of Measured Temperature

Central Temperature, Maximum Temperature, and Minimum Temperature are shown in numerical values.

- The central temperature of the image
- The highest temperature
- The lowest temperature

*"Central temperature" refers to the center of the range being measured (displayed) and not the median of the measured temperatures.

The display items can be changed in the settings.

Robust design resistant to drops

Dust and water resistance rated at IP54



Image for illustration purposes